

*Light up your dreams*

Publicazione senza alcuna periodicità | ISSUE N.3 | MULTIFORME® lighting

## DANCER

A BLEND OF THIN GLASS  
FOILS DROP-SHAPED AND  
SWAROVSKI ELEMENTS



# DANCER

## INDEX

4  
ABOUT

8  
TAILOR MADE

10  
THE IDEA

14  
INSTALLATION

18  
COLLECTION

20  
ABOUT US

We fulfill your desires with *unique* and *excellent* lighting works. With professionalism and passion, our daily aim is to bring the *tradition* into the future, enhancing the know-how and the values of the *Made in Italy* craftsmanship to spread beauty and create wonderful lighting products.

# About

Dancer is one of our interpretations of the traditional crystal and glass chandeliers. Composed by a cascade of tiny glass elements of different shapes reminds the fringes typical of the 20's fashion: thin glass foils, drop-shaped elements and Swarovski glass elements. The light comes out passing through the glass elements, thus creating a multitude of glares in the surrounding space.



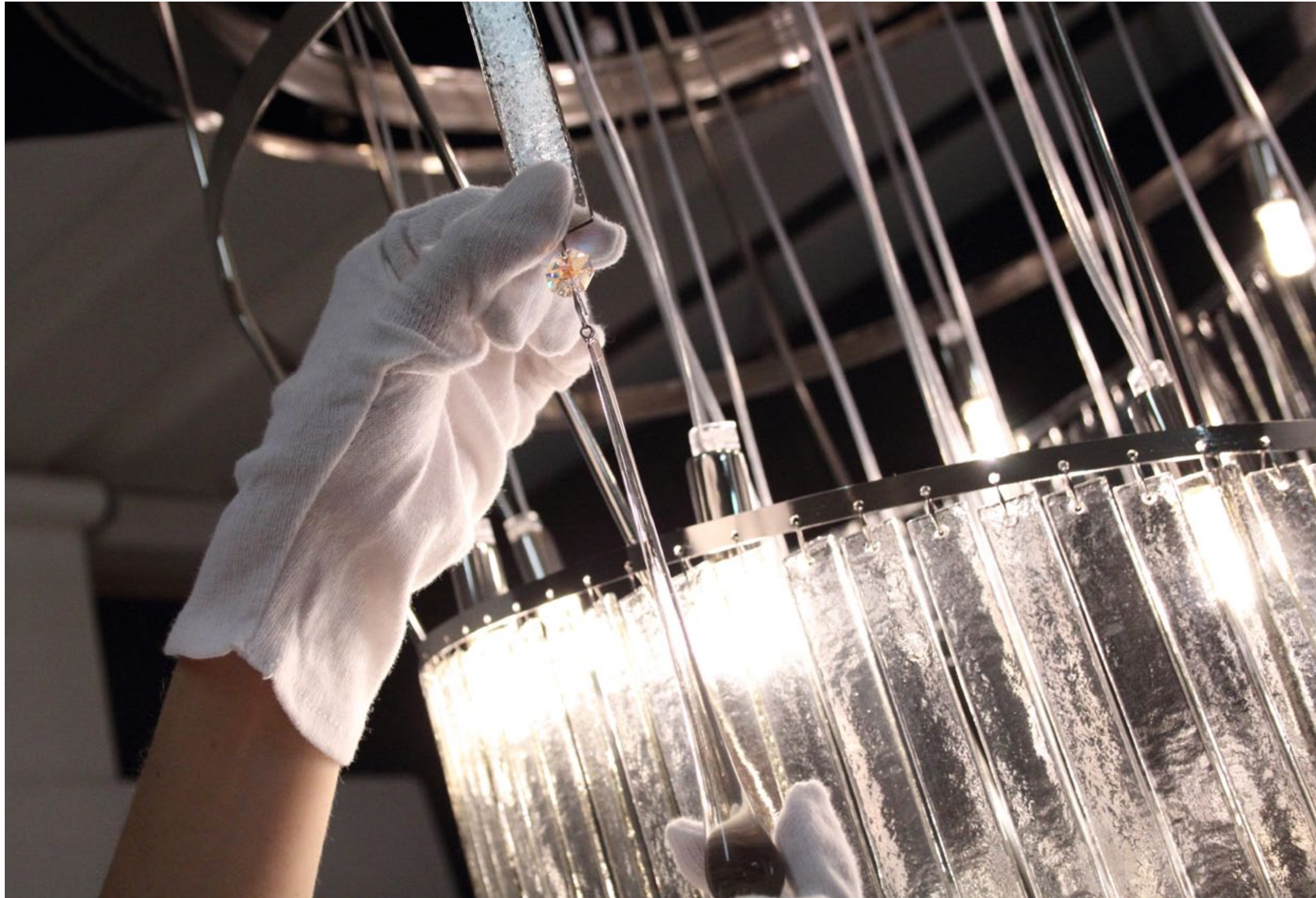


Nothing reveals more things than the movement

*(Marta Graham)*



# Tailor-made



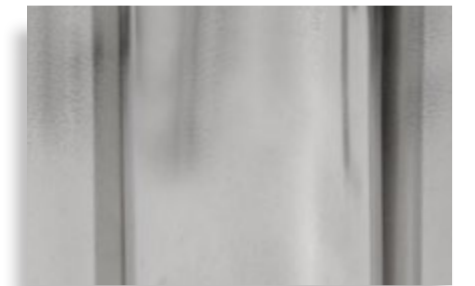
MULTIFORME DANCER



SMOKE



TANGERINE



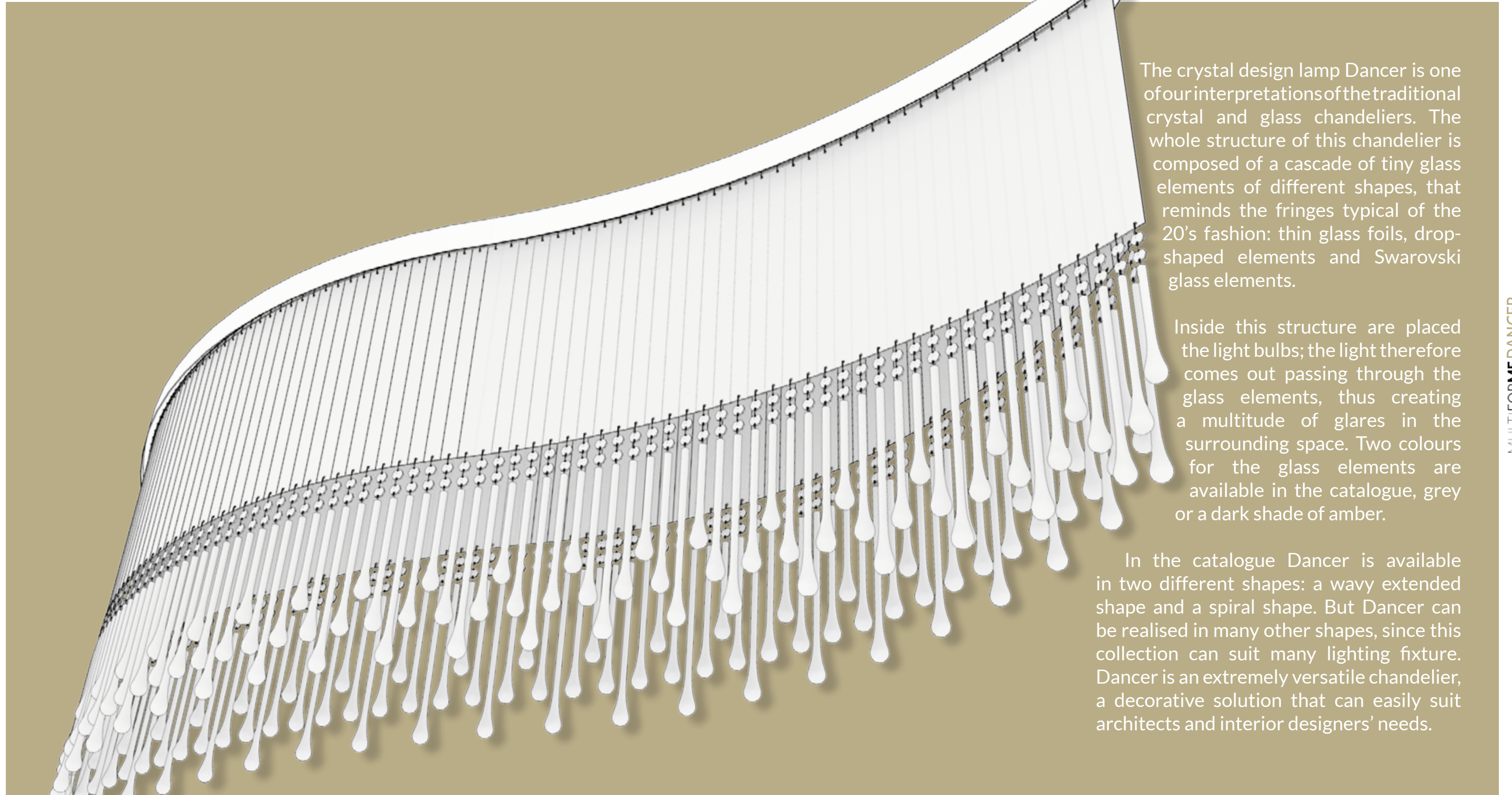
POLISHED NIKEL



POLISHED GOLD

MULTIFORME DANCER

# The idea



The crystal design lamp Dancer is one of four interpretations of the traditional crystal and glass chandeliers. The whole structure of this chandelier is composed of a cascade of tiny glass elements of different shapes, that reminds the fringes typical of the 20's fashion: thin glass foils, drop-shaped elements and Swarovski glass elements.

Inside this structure are placed the light bulbs; the light therefore comes out passing through the glass elements, thus creating a multitude of glares in the surrounding space. Two colours for the glass elements are available in the catalogue, grey or a dark shade of amber.

In the catalogue Dancer is available in two different shapes: a wavy extended shape and a spiral shape. But Dancer can be realised in many other shapes, since this collection can suit many lighting fixture. Dancer is an extremely versatile chandelier, a decorative solution that can easily suit architects and interior designers' needs.

Living is a Dancer





RUSSIA  
*Mosca*

MULTIFORME DANCER

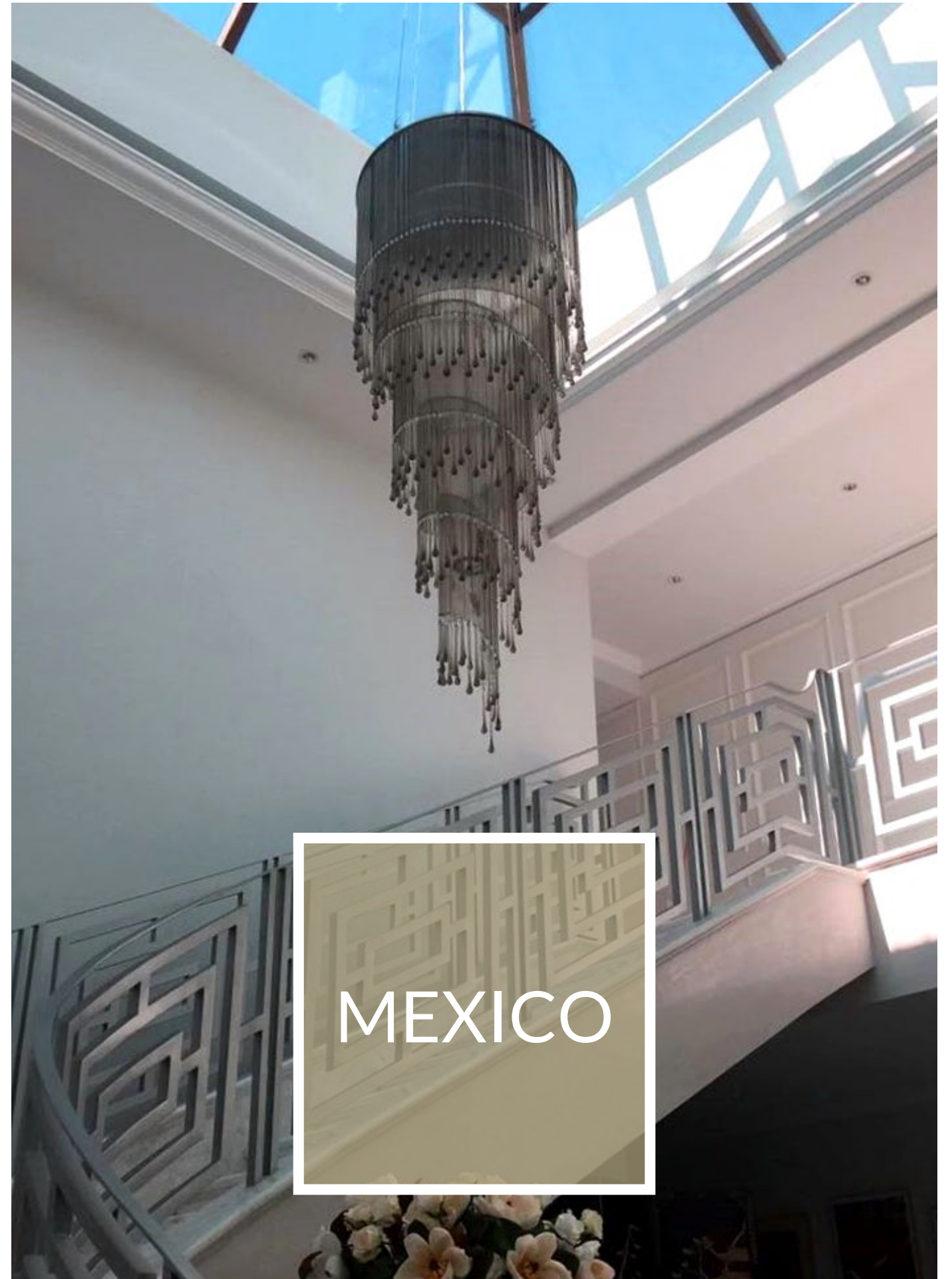
# Dancer in



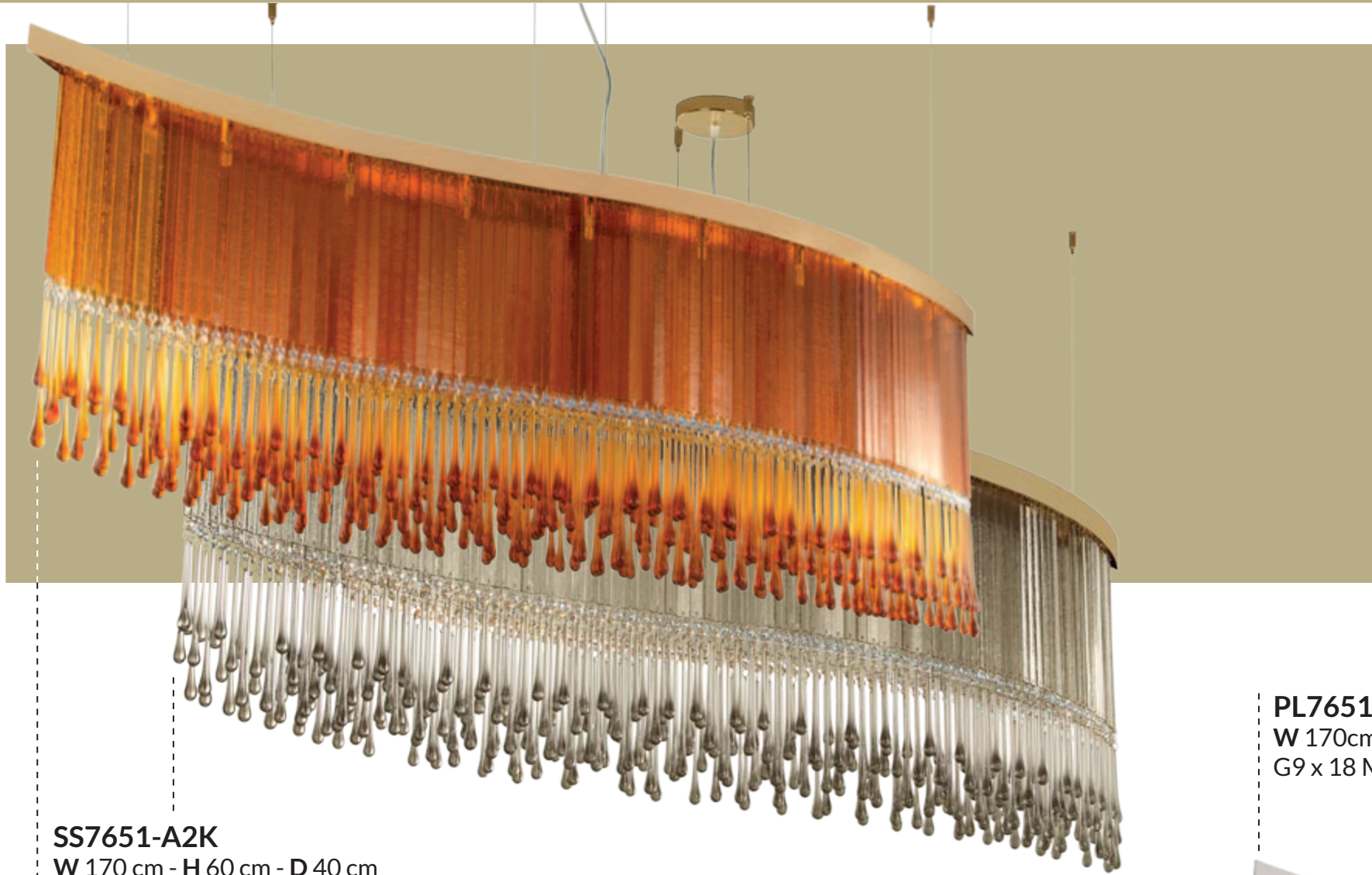
MULTIFORME DANCER

# the World





MEXICO



**SS7651-A2K**  
W 170 cm - H 60 cm - D 40 cm  
G9 x 18 MAX 40W - 40 KG

**SS7651-DK**  
W 170 cm - H 60 cm - D 40 cm  
G9 x 7 MAX 40W - 30 KG



**PL7651-DN**  
W 170cm - H 60 cm - D 40 cm  
G9 x 18 MAX 40W - 30 KG



# The Collection



**SS7651S-75x215-DN**  
Ø 75 cm - H 215 cm  
G9 x 25 MAX 25W - 64 KG



**AP7651-DK**  
W 35 cm - H 90 cm - D 18 cm  
G9 x 5 MAX 40W - 12 KG



**SS7651-S-DK**  
Ø 15 cm - H 90 cm  
E14 x 1 MAX 40W - 2,2 KG



**SS7651T-80-1CB**  
Ø 80 cm - H 50 cm  
G9 x 9 MAX 25W - 26 KG

# About us

MULTIFORME DANCER

## MULTI FOR ME

MULTIFORME® was born in 2009 and it is constantly growing in the decorative lighting international scenario, producing unique, creative and excellent works. Among its main strengths, there is the ability to create custom and bespoke products, providing tailored solutions to both public and private clients. MULTIFORME® lighting solutions are true expressions of the Made in Italy values, since they result from a production process which aims at excellence and that combines craftsmanship with design. A procedure where the customer perceives the attention to detail and the constant search for exclusivity in every phase.

MULTIFORME® knows how to express, in an authentic and dynamic way, style and creativity in each of its creations.

*light up your dreams*

MULTIFORME® sas di Zorzi Renata & C.

Via Via Montello Il Tronco, 19,  
35010 Trebaseleghe (PD), IT

VAT IT04349890287

Ph +39 049 9387669 - Mob +39 333 7570441

Fax +39 041 3965706

sales@multiforme.eu - www.multiforme.eu